

# sendQuick® Entera

## Business Process Applications

- Status Enquiry, Inventory Enquiry, Service Status
- Jobs & Information Dispatch for Workflow
- Appointment Reminders, Updates & Notifications
- Business Continuity, Call Centre Support
- IT Alerts & Monitoring



### BACKEND APPLICATIONS

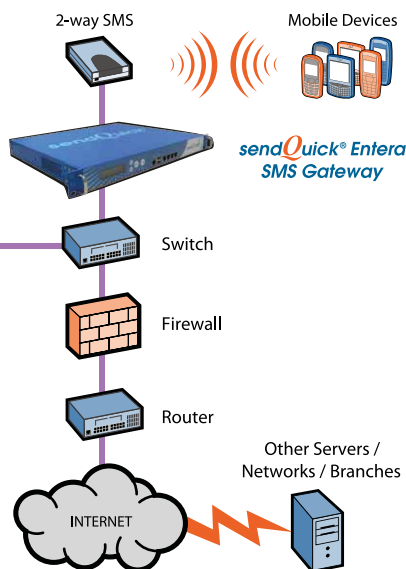
- Call / Contact Center
- Customer Relationship Management
- Supply Chain Management
- Point-of-Sale / Accounting Systems
- Enterprise Resource Planning (ERP) System

### MESSAGING AND COMMUNICATIONS SERVERS

- Web / Content Server
- Email / Messaging Server
- Database Server
- Voice Mail / Unified Messaging Server
- PABX / IP PBX Systems

### SECURITY AND NETWORK ADMINISTRATION SERVERS

- Intrusion Detection / Prevention System
- Anti-Virus Server
- UPS / Backup Power Management System
- Infrastructure Monitoring System
- Cable Management System
- Network Monitoring Server



Is your business losing customers because you are not responsive enough? What happens when there is an intrusion in your network infrastructure? Can your sales team retrieve real-time information to help close sales when on the move?

Your business has a variety of communications needs. Traditional methods of email, voice call, paging and faxes are often costly and may not be as quick in reaching the relevant persons or getting the right information. Short Messaging Service (SMS) is a very useful and non-intrusive communication method that is ideal for getting your messages across fast. You can deploy SMS in a huge number of ways in your business processes so that you remain responsive to your customers and become more efficient and competitive. sendQuick® Entera is the solution to your enterprise mobile messaging needs.

An Out-of-the-Box Solution sendQuick® Entera is designed as an out-of-the-box SMS gateway which can be configured and installed for your business in just minutes, allowing you to save precious time and money. Designed to fit in your LAN network, sendQuick® Entera will convert email messages, HTTP Post and other messaging formats received from your other backend applications and send them as SMS to your designated recipients. In addition, it has the ability to convert alert messages from your monitoring and security infrastructure to SMS, providing instant and concise information on the events happening in your office and data centers.



## KEY FEATURES

- Web based configuration for Server Administrator for easy administration
- Plug and Play appliances for easy maintenance and support
- Web-based user interface with address book and canned messages to send SMS
- Multiple user access rights, configurable by the user administrator for better user management
- Automatic SMS message routing (using SMS keyword) for interactive information on-demand
- Email filter system to send only important alerts to single or multiple users
- SMTP (email), SNMP Trap and Syslog filter for selective SMS alert messages
- Built-in reminder and escalation function, suitable for IT alerting needs
- Network monitoring function (PING, Port check and URL check) for system downtime alerts
- Hassle-free integration to an unlimited number of backend applications
- Send SMS using FTP (file) and ODBC (database) Connection
- Dual integration via email or HTTP Post for sending and receiving SMS
- All messages are date/time stamped for monitoring and tracking purposes
- Support High Availability (HA) options with simultaneous dual server performance (hot-hot)
- Options for RAID1 systems upgrade with RAID1 capable hardware
- Supports unlimited numbers of network and security devices
- 2-way SMS communication
- Highly scalable, supporting up to 32 modems

## REAL BUSINESS MESSAGING APPLICATIONS

sendQuick® Entera is suitable for all industries with real business messaging applications. Below are a few examples from some sample industries:

### PHARMACEUTICAL

- SMS to sales team when order comes in from clinics or hospitals
- Check information real-time via SMS for field staff
- SMS alerts for system problems

### HEALTHCARE (HOSPITALS & CLINICS)

- SMS to patients on appointment reminders
- SMS to doctors and nurses on important messages
- SMS for emergency message deployment

### BUILDING MAINTENANCE

- 2-way SMS to technicians for job dispatch and tracking & Technical Support
- SMS reminder to clients in servicing dates and data capturing (eg. meter reading)

### EDUCATION

- SMS to students on class schedules, exam dates, results and reminders to pay fees etc.
- SMS to parents if students fail to attend classes

### DATA CENTERS & IT SUPPORT SERVICES

- Use SMS for system alerts to IT support staff
- SMS can provide data tracking (incidence reporting) for each support call/work done

### RETAIL, HOTEL, TRAVEL & CONSUMER SERVICES

- Use SMS for reservations of restaurants, services, facilities and others
- Use SMS for marketing & promotions such as discounts, contests, games, etc.
- SMS for job dispatch for support/maintenance

### MANUFACTURING

- Information updates (2-way) for factory, sales and other relevant information
- Systems and manufacturing machines alert for problems and events
- Alert messages for clean room production & monitoring systems

### EMERGENCY MESSAGING

- SMS messages for emergency message deployment
- SMS messages for business continuity requirements

### CALL/CONTACT CENTRES

- Outbound SMS for message confirmation for call centre enquiries
- Inbound SMS as an additional communication for call centres
- SMS alerts when problems with IP PBX systems

For more information, please visit [www.talariax.com](http://www.talariax.com)

Authorised Distributor/Reseller

# Real Business Messaging Applications

sendQuick® Entera is suitable for all industries with real business messaging applications.

## HARDWARE SPECIFICATIONS

- 1U rackmount server (standard 19 inch with rackmount kit)
- Single CPU (Dual Core)
- Min 1GB RAM
- 250 GB HDD (SATA)
- 4 x 10/100/1000 NIC
- 4 X USB, 1 X RS232, 1 X VGA
- 200W PSU (x1)
- Dimension: 426mm (W) x 365mm (D) x 44mm (H)
- Certification: CE, FCC, UL
- Estimated weight: 7.5 kg
- Support GSM (850,900,1800,1900) and CDMA modem
- All software (Linux, PostgreSQL, Apache, Qmail, FreeRadius) pre-installed

## SOFTWARE SPECIFICATIONS

- sendQuick® Entera software
- Apache web server
- Qmail email server
- PostgreSQL database server
- Web interface configuration



TalariaX Pte Ltd  
76 Playfair Road #08-01 LHK 2 Singapore 367996  
Tel: +65 6280 2881 Fax: +65 6280 6882  
[www.facebook.com/sendQuick](http://www.facebook.com/sendQuick)

Copyright © 2002-2012 TalariaX Pte Ltd. All Rights Reserved. sendQuick product name is a registered trademark of TalariaX Pte Ltd, a company incorporated in the Republic of Singapore. Pentium and Celeron are service names, trademarks or registered trademarks owned by their respective owners. Microsoft, Microsoft Exchange, Microsoft Outlook, Outlook, Outlook 2007 are registered tradenames and trademarks of Microsoft Corporation. IBM, Lotus, Lotus Notes, Domino are registered tradenames and trademarks of IBM Corporation. All other trademarks mentioned in this document are the property of their respective owners.