

CEL-FI GO

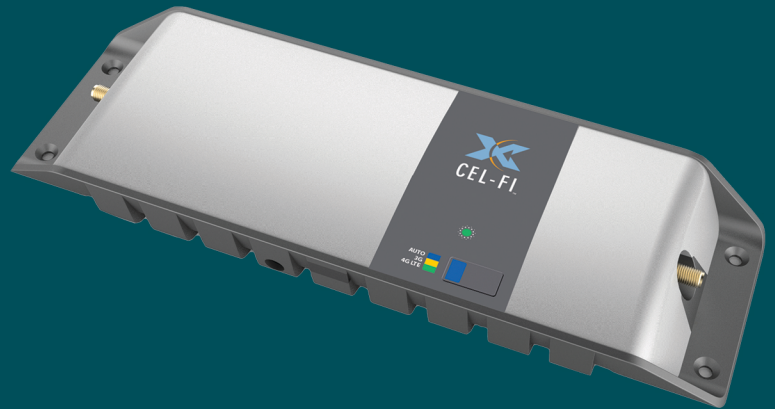
Smart Signal Repeater

Your solution to improve 3G/4G voice and data coverage

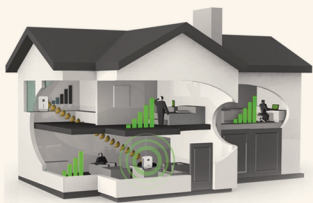


IMPROVE YOUR MOBILE COVERAGE

The Cel-Fi GO repeater is a cabled 3G/4G mobile signal amplifier that provides up to 100dB of signal gain. It is a flexible solution optimised for all applications including homes, offices, cars, trucks, 4 wheel drives, caravans, marine vessels and more, to amplify the mobile signal from outside and disburse within.



BENEFITS OF CEL-FI GO



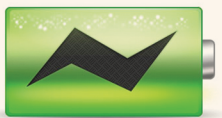
Provides Coverage for Indoor & Outdoor, Buildings & Vehicle Applications

Cel-Fi GO is flexible for advanced installations. It has an IP66 protection rating. No longer will you need to move to a particular spot to be able to make and receive phone calls. Your Cel-Fi GO can be configured to improve the mobile coverage for many types of applications including homes, offices, cars, trucks, 4 wheel drives, caravans, marine vessels and more.



Increases Mobile Data Speeds

Slow internet speeds on your mobile phone are often caused by low signal. If you suffer from low signal, you will be able to relate to the frustration of trying to access email or the internet. Cel-Fi GO will amplify the available LTE/HSPA mobile signal and could increase your data speeds.



Extends Mobile Phone Battery Life

Mobile phones use a lot more energy when in poor signal areas. The phone adjusts its internal power output to compensate in an attempt to boost the poor signal. As a result, the phone will consume a lot more battery power. Using Cel-Fi GO, your indoor mobile signal should be higher, and your battery will last noticeably longer for you to work and talk.



Eliminates Dropped or Missed Calls

Never miss or lose an important call because of coverage issues again. Cel-Fi GO will provide continuous coverage so you can be contacted when required. No longer do you have to put up with calls dropping out or terminating during conversation.



Improves Voice Quality

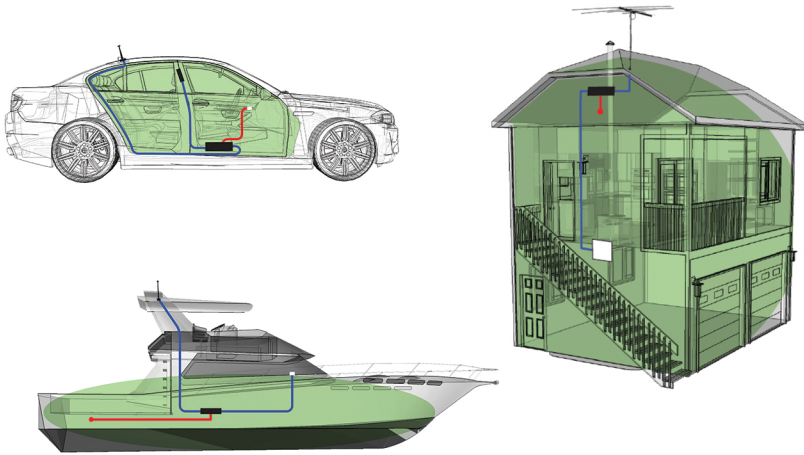
The quality of a voice call is usually determined by the phone's signal strength and nearby interference. With improved signal strength inside your building, the Cel-Fi GO will provide crystal clear voice quality for your mobile phones.

CEL-FI FEATURES

- Amplifies and disburse a Telstra or Optus mobile signal.
- Provides automatic selection of the best bands in 3G or 4G without manual intervention, boosting one band at a time.
- Once installed, Cel-Fi GO has Automatic Gain Control (AGC) continuously monitoring system path loss to deliver maximum gain up to 100 dB.
- Provides mobile coverage in and around the vehicle/area.
- Rigid cast -aluminium casing with IP54 rating, suitable for adverse environments.
- Network-Safe protection that monitors mobile base stations in real time to ensure the Cel-Fi GO does not interfere with the normal function of the mobile network.
- 20 MHz of Bandwidth
- Uplink Muting Mode automatically shuts down uplink cellular transmissions when no active user equipment is detected.
- Cel-Fi GO supports Bluetooth Connectivity via the Celf-Fi WAVE App.
- Intuitive WAVE App allows quick and easy installation by a trained technician.

NOTES

Cel-Fi GO will provide coverage for 20+ active users depending on the mobile network capacity in your area.



INSTALLATION

Cel-Fi GO requires an indoor and outdoor antenna to work. Available in packs.

Your Cel-Fi GO is carrier approved if installed correctly. Only qualified resellers who have undertaken product training should perform installation of Cel-Fi GO.

Misuse of this equipment could result in injury and equipment damage.

Cel-Fi is the choice of professionals to improve in-building mobile coverage.

SPECIFICATIONS

MODELS

1. Cel-Fi GO O for Optus
2. Cel-Fi GO Stationary for Telstra
3. Cel-Fi GO Mobile for Telstra

CELLULAR BANDS

700/ 900/1800 MHz (Optus)
700/ 850/1800 MHz (Telstra)

SYSTEM GAIN

Up to 100 dB per band

DIMENSIONS

Size: 28MM (H) 87MM (W) 255MM (L)
Weight: 600g

ENVIRONMENT

Operating temperature: 0° to 65°C
Relative humidity: 0 to 95%, noncondensing

POWER

9.6 to 28.8VDC via external supply
External supply: 100 to 240 VAC, 47 – 63Hz.
Nominal power consumption 1SW

ANTENNA REQUIREMENTS

SMA Female Outdoor Antenna Connector (50 Ω)
SMA Female Indoor Antenna Connector (50 Ω)

CERTIFICATIONS

CE Mark, CB Mark, RCM, R-NZ

WARRANTY

Cel-Fi GO is covered by a 24-month warranty.
*Please note each Cel-Fi GO is locked to the carrier of your choice. It can not operate for multiple carriers.

For more information please contact Powertec Wireless Technology

📞 1300 769 378

✉ sales@powertec.com.au

🌐 www.powertec.com.au