

## Parallel mast mount clamps

Page 1 of 2

  
In-stock  
Ready to  
Ship  
\*Build to order  
item



### EB1-SS

Construction	304 stainless steel
Boom diameter	20-40mm - round
Mast diameter	20-45mm - round
Orientation	Parallel 180°
Service	Light to medium-duty
Weight	380grams

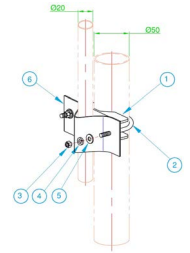
2 clamps recommended for mounting



### UB3-SS

Construction	304 stainless steel
Boom diameter	20-32mm - round
Mast diameter	20-45mm - round
Orientation	Parallel 180°
Service	Light to medium-duty
Weight	450grams

Single clamp sufficient for mounting



### UB4-SS\*

Construction	304 stainless steel
Boom diameter	20-32mm - round
Mast diameter	20-50mm - round
Orientation	Parallel 180°
Service	Light-duty
Weight	400grams

Single clamp sufficient for mounting



### SB1

Construction	Galvanised mild steel
Boom diameter	48.4mm - round
Mast diameter	48.4mm - round
Orientation	Swivel 360°
Service	Medium-duty
Weight	1.7kg



### SB4

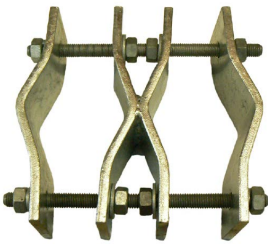
Construction	Galvanised mild steel
Boom diameter	48.4mm - round
Mast mounting	Using M10 bolt
Orientation	360° mounting
Service	Medium-duty
Weight	1.7kg

## Parallel mast mount clamps

Page 2 of 2



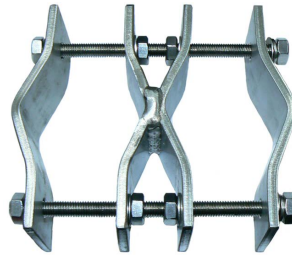
**In-stock  
Ready to  
Ship**  
\*Build to order  
item



### UAM180L

Construction	Galvanised mild steel
Boom diameter	40-75mm - round
Mast diameter	40-75mm - round
Orientation	Parallel 180°
Service	Heavy-duty
Weight	1.8kg

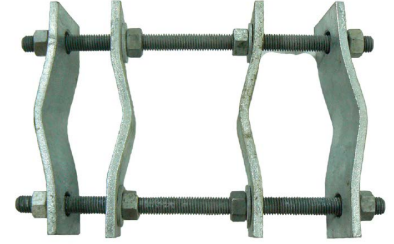
2 clamps recommended for mounting



### UAM180L-SS316\*

Construction	316 stainless steel
Boom diameter	40-75mm - round
Mast diameter	40-75mm - round
Orientation	Parallel 180°
Service	Heavy-duty
Weight	1.8kg

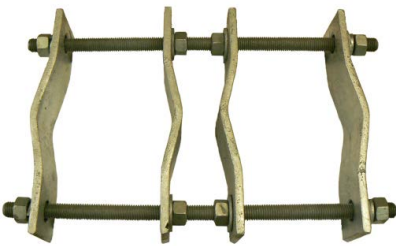
2 clamps recommended for mounting



### UAM180UNI

Construction	Galvanised mild steel
Boom diameter	40-75mm - round
Mast diameter	40-90mm - round
Orientation	Parallel 180°
Service	Heavy-duty
Weight	1.9kg

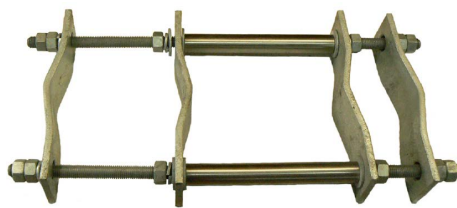
2 clamps recommended for mounting



### UAM180UNIL

Construction	Galvanised mild steel
Boom diameter	40-90mm - round
Mast diameter	60-115mm - round
Orientation	Parallel 180°
Service	Heavy-duty
Weight	2.1kg

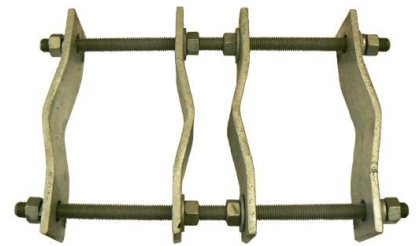
2 clamps recommended for mounting



### UAM180UNI-42

Construction	Galvanised mild steel with 42mm stainless steel spacers
Boom diameter	40-90mm - round
Mast diameter	60-115mm - round
Orientation	Parallel 180°
Service	Heavy-duty
Weight	2.3kg

2 clamps recommended for mounting



### UAM180UNIL-48

Construction	Galvanised mild steel
Boom diameter	50-70mm - round
Mast diameter	115-155mm - round
Orientation	Parallel 180°
Service	Heavy-duty
Weight	2.5kg

2 clamps recommended for mounting