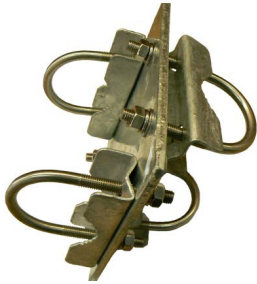


## Right-Angle Heavy Duty Mast Mount Clamps

Page 1 of 2



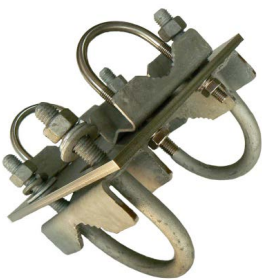
**Y2300**

Construction	Galvanised mild steel
Boom diameter	32-50mm - round
Mast diameter	30-50mm - round
Orientation	Right-angle 90°
Service	Heavy-duty
Weight	1.8kg



**Y2300-SS**

Construction	304 stainless steel
Boom diameter	32-50mm - round
Mast diameter	30-50mm - round
Orientation	Right-angle 90°
Service	Heavy-duty
Weight	1.7kg



**Y2300L**

Construction	Galvanised mild steel
Boom diameter	32-50mm - round
Mast diameter	40-70mm - round
Orientation	Right-angle 90°
Service	Heavy-duty
Weight	2.6kg



**Y2300SS-L**

Construction	304 stainless steel
Boom diameter	32-50mm - round
Mast diameter	30-70mm - round
Orientation	Right-angle 90°
Service	Heavy-duty
Weight	2.3kg

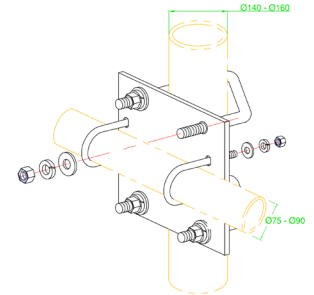
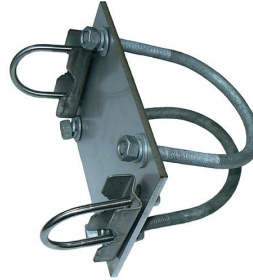


**Y2300SS-XL**

Construction	304 stainless steel
Boom diameter	32-50mm - round
Mast diameter	70-90mm - round
Orientation	Right-angle 90°
Service	Heavy-duty
Weight	2.4kg

## Right-Angle Heavy Duty Mast Mount Clamps

Page 2 of 2



### C-115

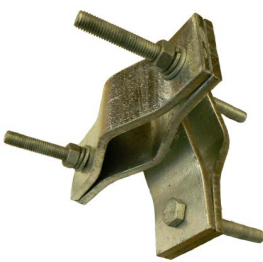
Construction	Galvanised mild steel
Boom diameter	32-50mm - round
Mast diameter	115mm - round
Orientation	Right-angle 90°
Service	Heavy-duty
Weight	3.5kg

### C-125

Construction	Galvanised mild steel
Boom diameter	32-50mm - round
Mast diameter	140mm - round
Orientation	Right-angle 90°
Service	Heavy-duty
Weight	3.5kg

### C169

Construction	304 stainless steel and galvanised large U-bolts
Boom diameter	30-50mm - round
Mast diameter	100-120mm - round
Mounting orientation	Right-angle 90°
Weight	3.5kg



### UAM90L

Construction	Galvanised mild steel
Boom diameter	40-75mm - round
Mast diameter	40-75mm - round
Orientation	Right-angle 90°
Service	Heavy-duty
Weight	1.7kg

### UAM90LL

Construction	Galvanised mild steel
Boom diameter	60-115mm - round
Mast Diameter	60-115mm - round
Orientation	Right-angle 90°
Service	Heavy-duty
Weight	2.2kg

### UAM90UNI

Construction	Galvanised mild steel
Boom diameter	40-70mm - round
Mast diameter	40-90mm - round
Orientation	Right-angle 90°
Service	Heavy-duty
Weight	1.9kg



## Right-Angle Heavy Duty Mast Mount Clamps

Page 2 of 2



SB1	
Construction	Galvanised mild steel
Boom diameter	48.4mm - round
Mast diameter	48.4mm - round
Orientation	Swivel 360°
Service	Medium-duty
Weight	1.7kg



SB2	
Construction	Galvanised mild steel
Boom diameter	48.4mm - round
Mast diameter	48.4mm - round
Orientation	Set right-angle 90°
Service	Medium-duty
Weight	1.7kg



SB4	
Construction	Galvanised mild steel
Boom diameter	48.4mm - round
Mast mounting	Using M10 bolt
Orientation	360° mounting
Service	Medium-duty
Weight	1.7kg