

# RobustLink Central Manager

## Centralized M2M Management Platform

For GoRugged R3000, R3000 Quad, R3000 Lite, R2000, R2000 Dual, M1000 XP Lite, M1000 XP and M1000 Pro V2

Robustel RobustLink is an industrial-grade centralized management and administration system for Robustel GoRugged R3000, R3000 Quad, R3000 Lite, R2000, R2000 Dual, M1000 XP Lite, M1000 XP and M1000 Pro V2. It allows you to monitor, configure and manage large numbers of remote devices on a private network over the web.

### Key Features

- Remote monitoring
- Remote configuration (except for the M1000 series)
- Remote firmware upgrade: immediately/plan upgrade
- Dashboard: device status, device types, SIM send/receive traffic, signal strength
- Alarm via web/e-mail
- GPS location on map
- Data forwarding
- Number of devices: up to 2000
- Management: Web

### Hardware Requirements

Your host hardware must meet the following minimum requirements:

For 1200 devices (up to 1200, recommended for 800)

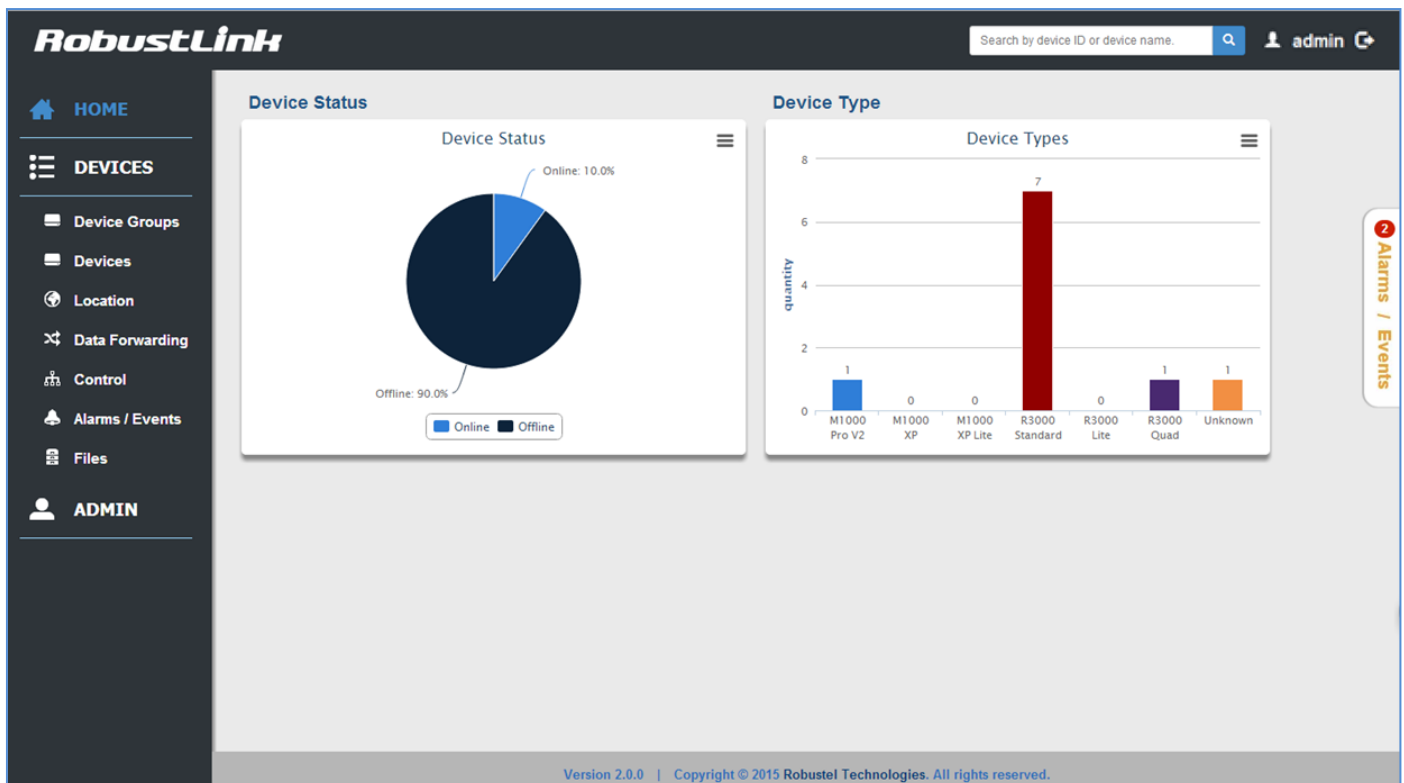
- CPU: 4 Cores, 3.0 GHz
- RAM: 16 GB
- Disk: 512 GB
- Bandwidth:  $\geq 100$ MBps

For 2000 devices (up to 2000, recommended for 1500)

- CPU: 8 Cores, 3.2 GHz
- RAM: 32 GB
- Disk: 1 TB
- Bandwidth:  $\geq 100$ MBps

### Software Requirements

- O/S: Linux CentOS 6.X
- Supports installation packet
- Browser: IE 9.0 or above, Chrome, Firefox



Contact:

[www.robustel.com](http://www.robustel.com)

[info@robustel.com](mailto:info@robustel.com)